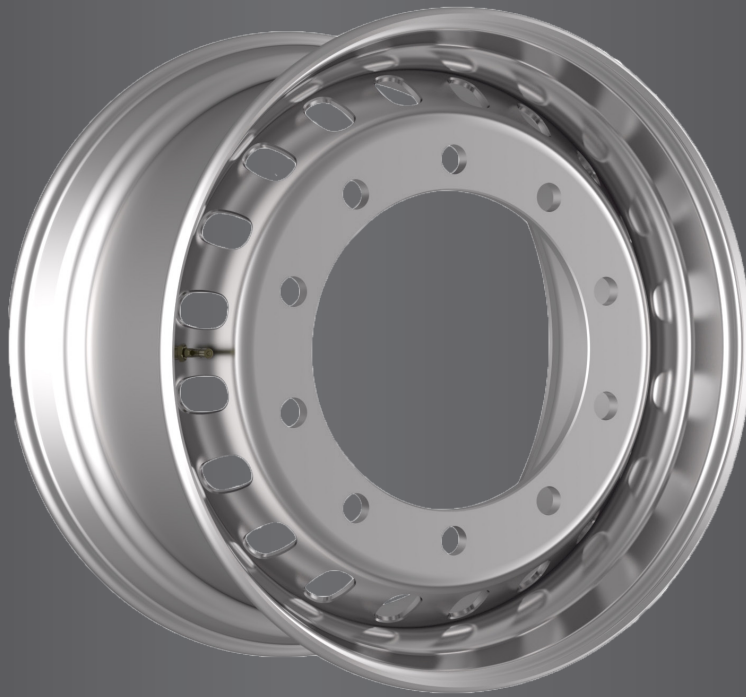




Lightweight Steel Wheels

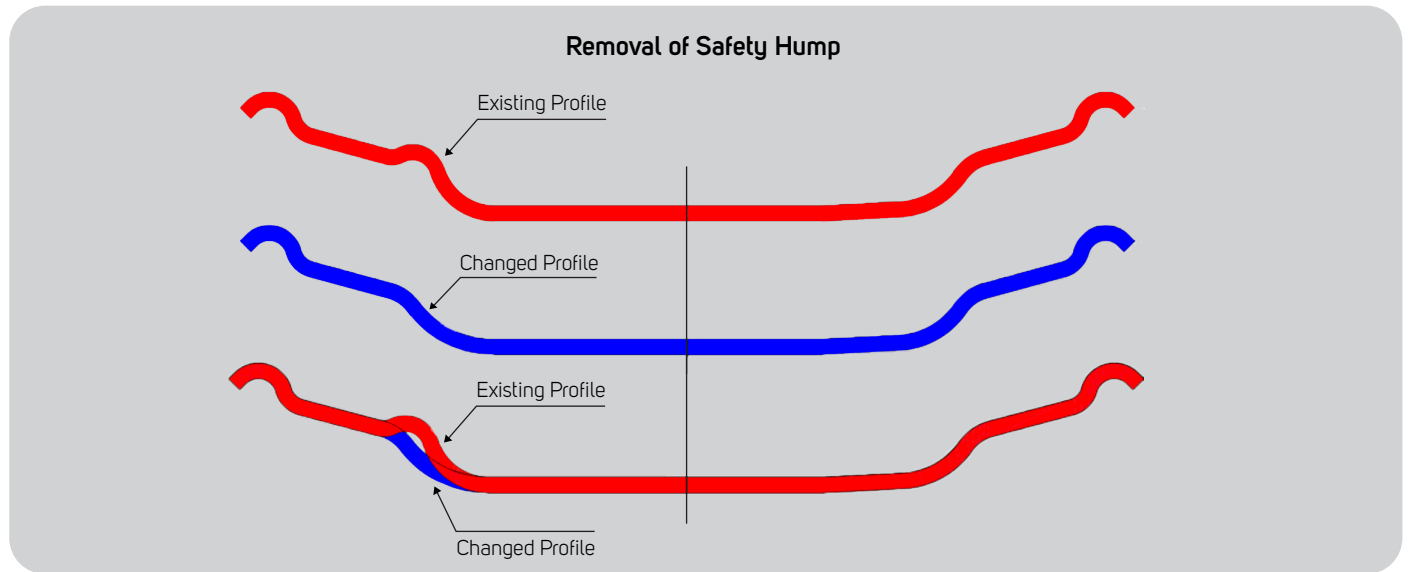


A new generation of lightweight wheels



A new generation of steel wheels.

Accuride is pleased to introduce its new generation of lightweight steel wheels in Europe. These wheels are designed to fit the trailer industry.



FEATURES

| Characteristics | Benefits |
|-----------------------------------|-----------------------------------|
| New design with optimized profile | Fatigue life improvement |
| TPMS compatible | Weight saving and lower emissions |
| Valve protected design | Higher possible payload |

SPECIFICATIONS

| Wheel Size | Part Number | Center Hole | Pitch Circle | Number of Stud Holes | Bolt Hole (mm) | Inset (mm) | Offset (mm) | Weight (kg) | Max Load (kg) | Valve |
|--------------|-------------|-------------|--------------|----------------------|----------------|------------|-------------|-------------|---------------|---------|
| 22.5 x 11.75 | 15146 | 281 | 335 | 10 | M22 | 120 | - | 38.5 | 5.000 | V3-22-1 |
| 22.5 x 11.75 | 15152 | 281 | 335 | 10 | M22 | 0 | - | 35 | 5.000 | V3-22-1 |
| 22.5 x 11.75 | 15153 | 281 | 335 | 10 | M22 | 45 | - | 35 | 5.000 | V3-22-1 |

Your only single source for industry-leading wheel end solutions.

STEEL & ALUMINUM WHEELS | DRUMS | HUBS | ROTORS | SLACK ADJUSTERS

For more information: **+49 (0) 212 701 2212** | accuridecorp.com

Accuride Corporation | 7140 Office Circle | Evansville, IN 47715 USA

